

|                    |                              |                            |
|--------------------|------------------------------|----------------------------|
| <b>ENGINEERING</b> | <b>PRODUCT SPECIFICATION</b> | <b>SPEC. NO.: SPCU004B</b> |
| <b>DEPT.</b>       | <b>DVI CONNECTOR</b>         | <b>PAGE: 1 / 3</b>         |

1. SCOPE:

This specification contains the test requirement of subject connectors when tested under the condition and below standards base on CviLux test procedure

2. APPLICABLE STANDARDS:

Digital Visual Interface Revision 1.0

DDWG Standard

ANSI/EIA-364

Test Procedures and Conditions are referenced.

UL 94

Test for flammability of plastic materials for parts in devices and appliance

3. APPLICABLE SERIES No. : CU07 Series

4. SHAPE, CONSTRUCTION AND DIMENSIONS

See attached drawings

5. MATERIALS

See attached drawings

6. ACCOMMODATED P.C.BOARD

1.6 mm (.063")



APPROVED:     Alex     REVIEWED :     David     VERIFIED :     Sandy    .



|                                    |  |                            |
|------------------------------------|--|----------------------------|
| <b>ENGINEERING</b><br><b>DEPT.</b> | <b>PRODUCT SPECIFICATION</b><br><b>DVI CONNECTOR</b> | <b>SPEC. NO.:</b> SPCU004B |
|                                    |  | <b>PAGE:</b> 2 / 3         |

7. ELECTRICAL PERFORMANCE:

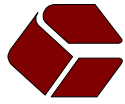
|     | ITEM                      | TEST CONDITION   | REQUIREMENT          |
|-----|---------------------------|--|----------------------|
| 7.1 | Rated current and voltage |  | 3.0A 40V AC (r.m.s.) |
| 7.2 | Contact resistance        | ANSI/EIA 364-23<br>Bulk resistance measured between plug solder tail and receptacle solder tails | 20 mΩ max.           |
| 7.3 | Dielectric strength       | When applied AC 500 V 1 minute between adjacent terminal   | No change            |
| 7.4 | Insulation resistance     | When applied DC 500 V between adjacent terminal or ground  | More than 1000 MΩ    |

8. MECHANICAL PERFORMANCE:

|     | ITEM                         | TEST CONDITION   | REQUIREMENT                                       |
|-----|------------------------------|--|---|
| 8.1 | Receptacle Contact retention | Retention speed 25± 3 mm per minute from housing                       | More than 0.45 Kgf                                |
| 8.2 | Receptacle Key retention     | Retention speed 25± 3 mm per minute from housing                       | More than 0.90 Kgf                                |
| 8.3 | Plug Contact retention       | Retention speed 25± 3 mm per minute from housing                       | 4.5 Kgf min.                                      |
| 8.4 | Plug Key retention           | Retention speed 25± 3 mm per minute from housing                       | 4.5 Kgf min.                                      |
| 8.5 | Mating Force                 | Speed 25± 3 mm per minute  | 4.5 Kgf max.                                      |
| 8.6 | Unmating Force               | Speed 25± 3 mm per minute  | 1.0 Kgf min.                                      |
| 8.7 | Durability                   | Connector shall be subjected to 100 cycles of insertion and withdrawal | Contact resistance:<br>Less than twice of initial |

9. ENVIRONMENTAL PERFORMANCE:

|     | ITEM             | TEST CONDITION   | REQUIREMENT  |
|-----|------------------|--|--|
| 9.1 | Temperature rise | Then carried the rated current   | 30°C max.  |
| 9.2 | Vibration        | 1.5 mm 10-55-10 HZ / minute each<br>2 hours for X , Y and Z directions | Appearance: No damage<br>Discontinuity:<br>1 micro second max. |
| 9.3 | Solder ability   | Soldering time: 5 ± 0.5 second<br>Soldering pot: 230 ± 5°C             | Minimum:<br>90% of immersed area                               |



|                                    |  |                            |
|------------------------------------|--|----------------------------|
| <b>ENGINEERING</b><br><b>DEPT.</b> | <b>PRODUCT SPECIFICATION</b><br><b>DVI CONNECTOR</b> | <b>SPEC. NO.: SPCU004B</b> |
|                                    |  | <b>PAGE: 3 / 3</b>         |

|     |                              |  |   |
|-----|------------------------------|--|---|
| 9.4 | Resistance to soldering heat | Soldering time: $5 \pm 0.5$ second<br>Soldering pot: $240 \pm 5^{\circ}\text{C}$ | No damage   |
| 9.5 | Heat aging                   | $105 \pm 2^{\circ}\text{C}$ , 250 hours  | Contact resistance:<br>Less than twice of initial |
| 9.6 | Humidity                     | ANSI/EIA 364-31,Condition A and B<br>Method 3 , omit 7A and 7B                   | Contact resistance:<br>Less than twice of initial |

10. AMBIENT TEMPERATURE RANGE:  $-20$  to  $+85^{\circ}\text{C}$

Materials:

\* Insulator: Glass filled PBT UL 94V-0

Color Nature

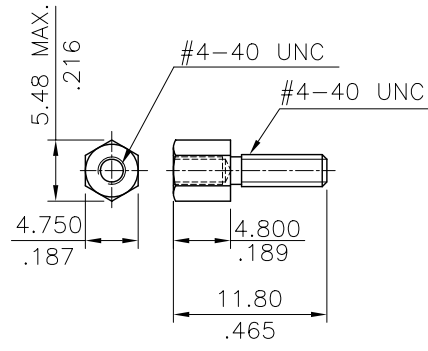
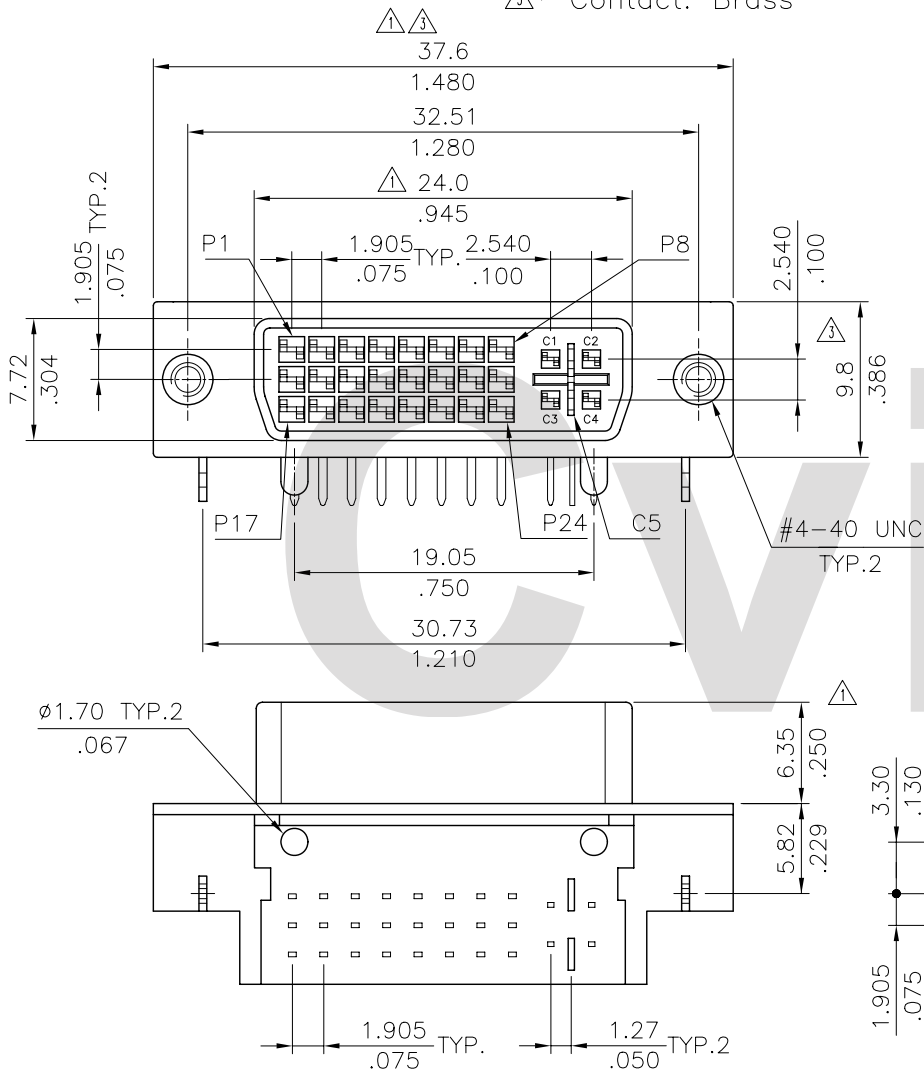
\* Shell: Zinc alloy with Nickel plated

△\* Contact: Brass

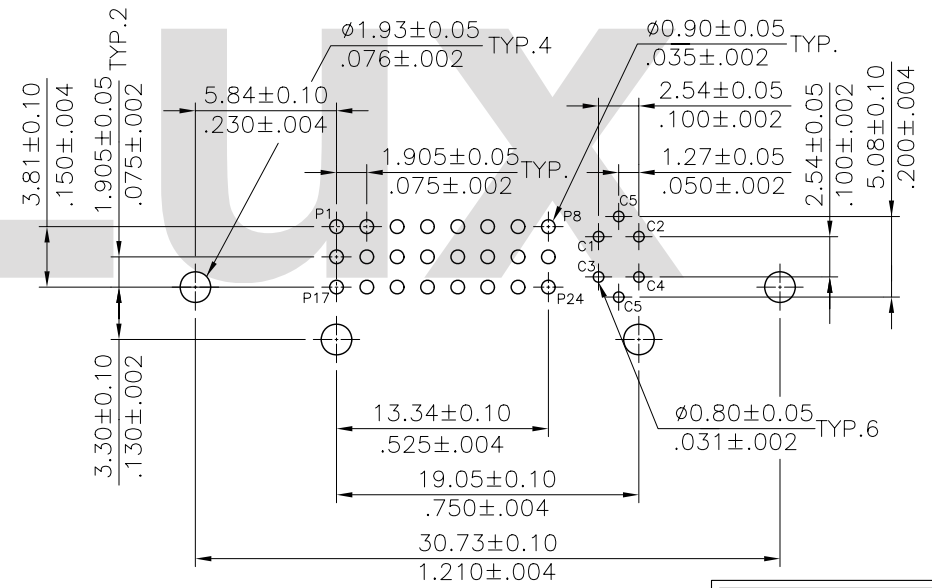
Ordering Code:

CU07 29 S \* H I G  
① ② ③ ④ ⑤ ⑥ ⑦

- ① Series No.
- ② Contacts: 29= 24+4+1
- ③ Contact type: S= Socket
- ④ Plating code:  
A= Selective Gold flash plated over 1.27μm(50μ") Nickel  
B= Selective 0.38μm(15μ") Gold plated over 1.27μm(50μ") Nickel  
C= Selective 0.76μm(30μ") Gold plated over 1.27μm(50μ") Nickel
- ⑤ Tail style: H= Right angle
- ⑥ Product type: I= Integrated Type
- ⑦ Option: G= Attach #4-40 UNC Hex screw




P/N:CDHWE101S00-A



Recommended P.C Board Layout

RoHS Compliant

|     |       |          |                      |                   |           |   |  |  |
|-----|-------|----------|----------------------|-------------------|-----------|---|--|--|
| ④   |       |          |                      |                   | DATE      | UNIT: mm / inch                         | TITLE: DVI R/A RECEPT. CONN.<br>(INTEGRATED TYPE 24+4+1) |  瀚荃股份有限公司<br>CviLux Corporation |
| ③   | Sandy | 11/27/06 | ECN06421             | DRAWN BY: Sandy   | 11/24/06' | TOLERANCE<br>UNLESS OTHERWISE SPECIFIED | MATERIAL:  |  |
| ②   | Sun   | 9/30/05' | ECR05067-0/ECN05275  | ENGINEER: Easley  | 11/27-06' | .X ± 0.30/.012 X' ± 1'                  | FINISH:  | DRAWING NO. CU0709SD   |
| ①   | JASON | 04/27-04 | ECN04171, ECR04038-0 | CHECKED BY: David | 11/27-06' | .XX ± 0.20/.008 .X' ±                   |  | PART NO. CU0729S*HIG   |
| SYM | NAME  | DATE     | REVISIONS            | APPROVED BY: Alex | 11/27-06' | .XXX ± 0.10/.004 .XX' ±                 | SCALE  | 2 / 1  |
|     |       |          |                      |                   |           |   | SHEET  | 1 OF 1   |

CVILUX CORP.  
 2006.12.06  
 ISSUED