 <small>ISO 9001 An ISO 14001 Company ORSAS 18001</small>	EXCEL CELL ELECTRONIC CO., LTD.	NO.		PAGE
				1/2
S P E C I F I C A T I O N		Edition	2	

USB CONNECTOR ESB 0 SERIES

■ FEATURES

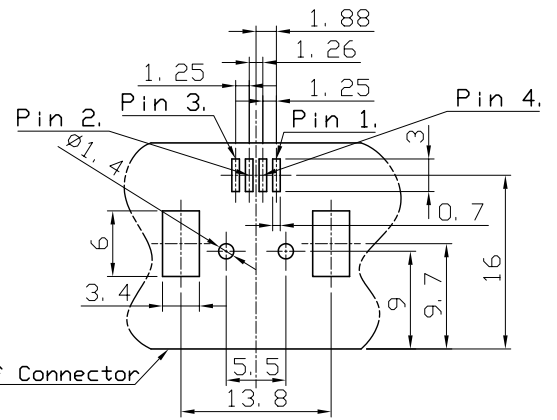
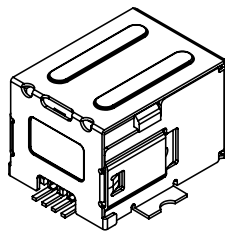
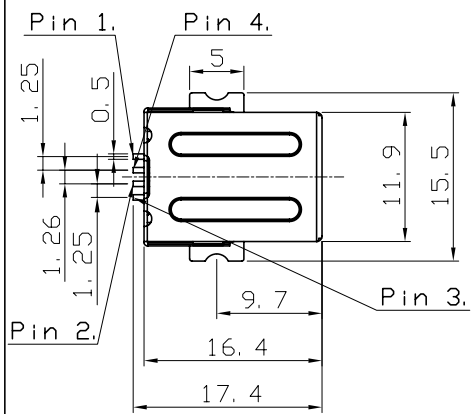
Both USB A type and B type are USB 2.0 approval
Raised design provides easy insertion and withdrawal, and guarantee even high reliability
Design of three certain restrains provides robustious structure
Gold plated contact ensure low contact resistance
All plastics are UL 94V-0 grade fire retardant
Up to 5 meters per cable segment
To make sure your connections are perfect every time

■ APPLICATIONS

PCs peripheral equipment (modem, scanner, HDTV, Printer, phone/answering, keyboard, Mouse, game controller, digital audio)
--

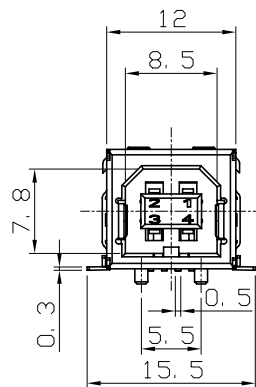
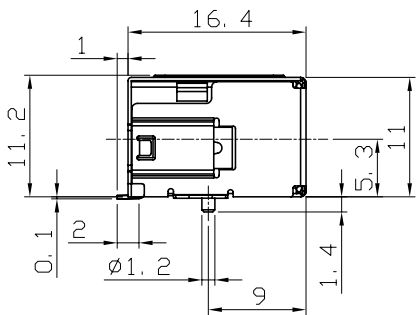
■ SPECIFICATIONS

SERIES	ESB 0 SERIES (GENERAL TYPE)
DESCRIPTIONS	
ELECTRICAL	
Voltage rating	30 VAC (rms)
Current rating	1 Amp
Contact resistance	30 mΩ Max.
Insulation resistance	1000 MΩ Min.
Dielectric strength	750 VAC Min.
MECHANICAL	
Durability	1500 cycles
Mating force	35N Max.
Unmating force	10N Min.
Temperature : storage operating	-40°C to + 60°C 0°C to + 40°C



P. C. B. Layout

RECOMMENDED PWB FOOTPRINT FOR RECEPTACLE(SMT TYPE)



Notes:

1.MATERIAL

Contacts : Phosphor Bronze
 Shell : Copper Alloy
 Insulator : Nylon [UL 94V-0 Molded]

2.PLATING

Nickel in all area
 Contact area : Au 30u" over Nickel [USB 2.0]
 Solder area : Tin [Sn] over Nickel
 Shell : Tin [Sn] over Nickel

		Normal Tolerance		EXCEL CELL ELECTRONIC CO., LTD.			Unit	MM(INCH)	Part Name	ESB 021			
		Range	Tolerance	Part Number	73802111212Z		Scale	2 : 1	Type	SMD Type			
		0 ~ 1	±0.1	Check	CCY	Design	Robert Liu	Drawn	Robert Liu	Quantity	-----	File Name	73802111212ZA.dwg
		1 ~ 4	±0.3							Processing	-----	Edition	A
		4 ~ 16	±0.5							Projection	-----	Surface Treatment	-----
		16 ~ 63	±0.8							No.	Details	Altered By	Date
		63 ~ 250	±1.0										

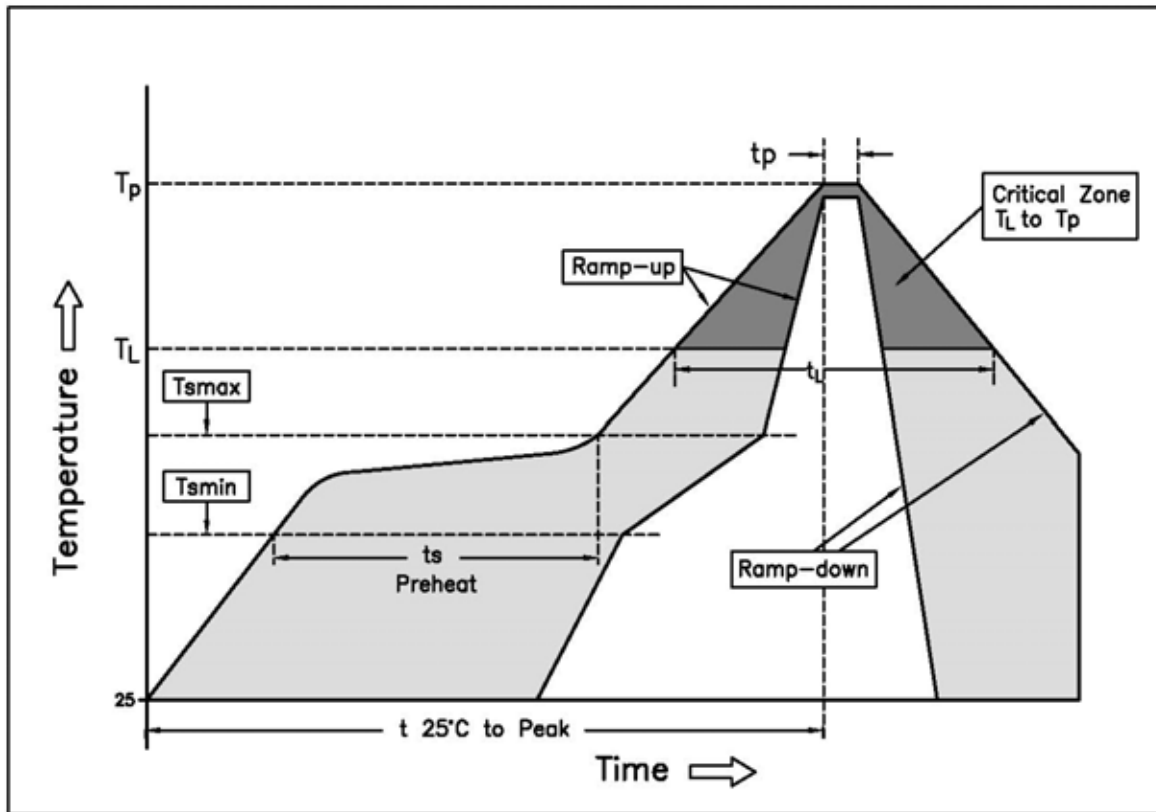


Table1 Classification Reflow Profiles

Profile Feature	Pb-Free Assembly	
	Large Body	Small Body
Preheat -Temperature Min (T _{min}) -Temperature Max (T _{max}) -Time (min to max)(t _s)	150 C 200 C 60~180 seconds	
T _{max} to T _L -Ramp-up Rate	3 C / second max	
Time maintained above: -Temperature(T _L) -Time (t _L)	217 C 30~60 seconds	
Average ramp-up rate (T _L to T _P)	3 C / second max	
Peak Temperature (T _P)	245 +0/-5°C	250 ±5°C
Time within 5°C of actual Peak Temperature(t _p)	10~20 seconds	10 seconds(max)
Ramp-down Rate	6°C / second max.	
Time 25°C to Peak Temperature	7 minutes max.	